



# **2025 Wine Grape Acreage Report**

British Columbia Ministry of Agriculture and Food

June, 2026

## Table of Contents

Executive summary .....	3
Introduction .....	3
Background .....	3
Data source and attributes .....	4
Geographic hierarchy .....	5
Definitions .....	5
Producer .....	5
Acres .....	5
Mature equivalent acres and young acres .....	6
Provincial overview .....	6
Analysis by region and area.....	8
Region: Central Okanagan.....	8
Area: Kelowna.....	9
Area: Lake Country.....	9
Area: West Kelowna/Peachland .....	10
Region: South Okanagan .....	10
Area: Oliver.....	11
Area: Osoyoos .....	11
Region: South Central Okanagan .....	12
Area: Naramata .....	12
Area: Penticton .....	13
Area: Summerland .....	13
Region: Similkameen .....	14
Region: Thompson/Shuswap.....	15
Region: Coast.....	16
Region: North Okanagan .....	16
Region: Kootenay.....	16
Caveats and limitations.....	17

## Executive summary

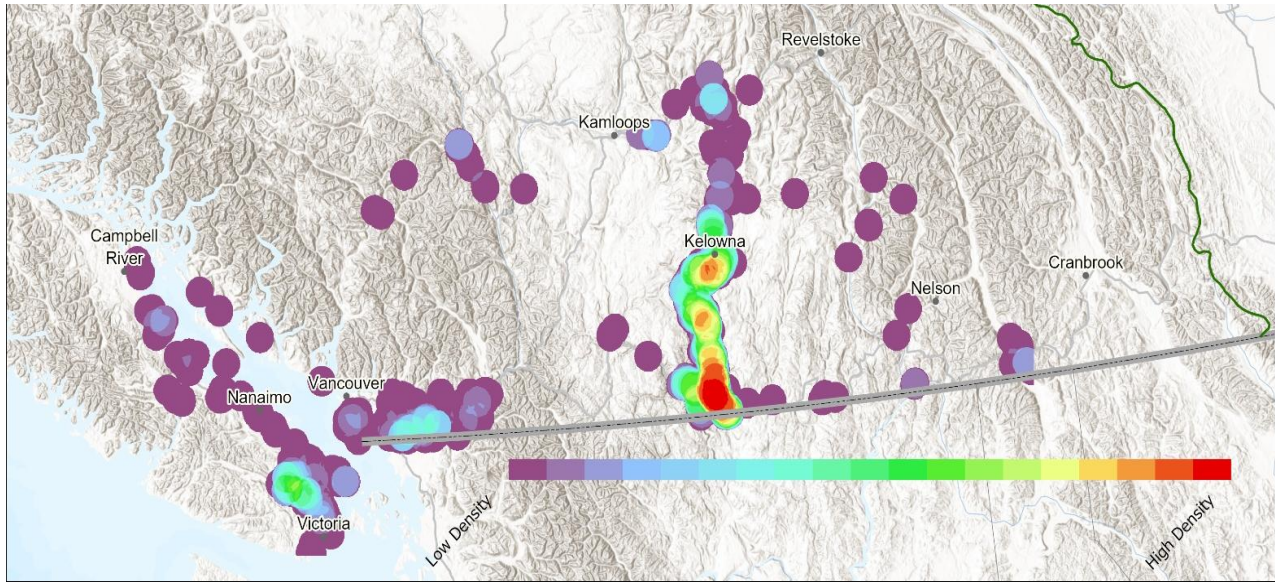
British Columbia’s wine grape industry is currently rebounding from a devastating period during which a series of climate-related shocks greatly impacted acreage and production, particularly in the Okanagan Valley. This report demonstrates that acreage is on its way to returning to healthy pre-shock levels, and that this recovery is unevenly distributed across geographic areas and grape varieties. This inaugural report, intended to coincide with the BC Wine Grape Council’s Annual Crop Assessment, is meant to illuminate the changes in acreage occurring at these finer resolutions to help B.C.’s producers take stock of current industry changes and make strategic decisions accordingly.

## Introduction

### Background

The wine grape industry is an important contributor to British Columbia’s agriculture sector, with annual farmgate receipts as high as \$80 million in some years. Although wine grape sales comprised only around 1.1% of total primary agriculture receipts in 2025, the industry provides a key input to B.C.’s expanding wine industry. Grape growers have set up extensive operations in areas of the province conducive to growing, with the majority concentrated in the Okanagan Valley and pockets of the Fraser Valley and Cowichan Valley. See Figure 1.

Figure 1: British Columbia wine grape production heat map



Source: Agriculture Land Inventory, BC Ministry of Agriculture & Food, 2026

As a result of adverse weather events, 2023-2025 was a period of diminished production and sales, with farmgate receipts falling as low as \$12 million in 2024. While the industry now shows signs of healthy recovery, it is important to understand at a granular level the immense changes to the acreage of multiple grape varieties that have occurred over the last several years, and to evaluate the planting decisions currently being made as this recovery builds momentum.

This report is intended to take the most current production insurance data available and showcase the current state of B.C.'s wine grape growers, situating today's picture within a longer timeframe that saw healthy growth followed by a series of climate-related crises. The report is organized as a series of regional profiles, with a particular focus on varieties. A clearer understanding of the regional changes occurring will help growers make strategic decisions, wine producers plan appropriately, government evaluate appropriate forms of support and interested members of the public track the long-term health of this industry. Lastly, the data used to analyze these trends can complement other sources used by industry.

### Data source and attributes

This report analyzes changes in acreage of wine grapes. Unless otherwise noted, the source for all tables and figures is production insurance data from Business Risk Management Branch, B.C. Ministry of Agriculture and Food. As such, the data includes only those farms that insure their crop. (For other caveats and limitations, see the final section of this report.) The data include year, geographic indicator, varietal, area, and

output. Given the intended audience, only wine grapes are included in the scope of this report, not table grapes.

### Geographic hierarchy

Growers who opt to purchase production insurance have their operations assigned to an Insurance Area, where most or all their business operations occur. There are 50 insurance areas. These are consolidated into Areas, and Areas into Regions, to allow for analysis while maintaining confidentiality. The following reference table contains the geographic hierarchy. For boundary descriptions of each region, see Appendix 1.

Table 1: Area and Region reference table

Area	Region
Kelowna, Lake Country, West Kelowna/Peachland	Central Okanagan
Oliver, Osoyoos	South Okanagan
Naramata, Penticton <sup>1</sup> , Summerland	South Central Okanagan
North Okanagan	North Okanagan
Similkameen	Similkameen
Thompson, Shuswap	Thompson/Shuswap
Vancouver Island, Fraser Valley	Coast
Creston Valley, Boundary	Kootenay

### Definitions

#### Producer

A producer is an insurance applicant who has an insurable interest in the crop being insured. For example, the producer owns the plants through land ownership, lease or some other agreement, and is entitled to the proceeds of the crop produced on that land. Where multiple interests exist, producers are treated separately only if they can establish legal, financial and operational independence; otherwise, they are combined as a single producer.

#### Acres

$$Acre = \frac{Vine\ count \times plant\ spacing\ (ft) \times row\ spacing\ (ft)}{43,560 \frac{ft^2}{acre}}$$

---

<sup>1</sup> Including Kaleden and Okanagan Falls

### Mature equivalent acres and young acres

A mature equivalent acre – referred to in this report as a mature acre – is an acre that has been multiplied by its maturity factor, expressed as a percentage. For example, 10 acres with vines that are 70% mature is equivalent to 7 mature acres. Removing differences in maturity allows for more accurate comparison of productivity levels across different geographic areas, years and varieties.

The difference between the *real* number of acres and the *derived* number of mature acres is an area referred to as “young acres” in this report. Although not completely synonymous with newly planted vines, it is a reasonable proxy. The higher the number, the greater the replanting that is occurring. In the example above, young acres = 3.

The number of young acres by variety is not displayed due to confidentiality. Rather, the tables in this report display percentages that reflect the young acres of a particular variety as a share of the total young acres in that area. For example, of all the young acres in Kelowna in 2026, 18% are chardonnay.

## Provincial overview

Wine grape production in B.C. has been in a state of flux for several years, facing a series of climate-related crises. Severe cold snaps in late 2022 and January 2024, combined with ongoing drought and heat dome events, have severely impacted the industry, with the 2024 freeze resulting in the near-total destruction of that year’s crop.<sup>2</sup> As a result, 2,490 acres were removed from production in 2025. However, almost all this area (2,388 acres) was replanted in 2026, bringing the total acreage to within 500 acres of 2023 levels. Annual trends in wine grape acreage are displayed in Figure 2 below.

---

<sup>2</sup> [Supporting British Columbia's Devastated Wine Industry \(2024\) | British Columbia Chamber of Commerce](#)

Figure 2: Provincial area (in acres), 2017-2026

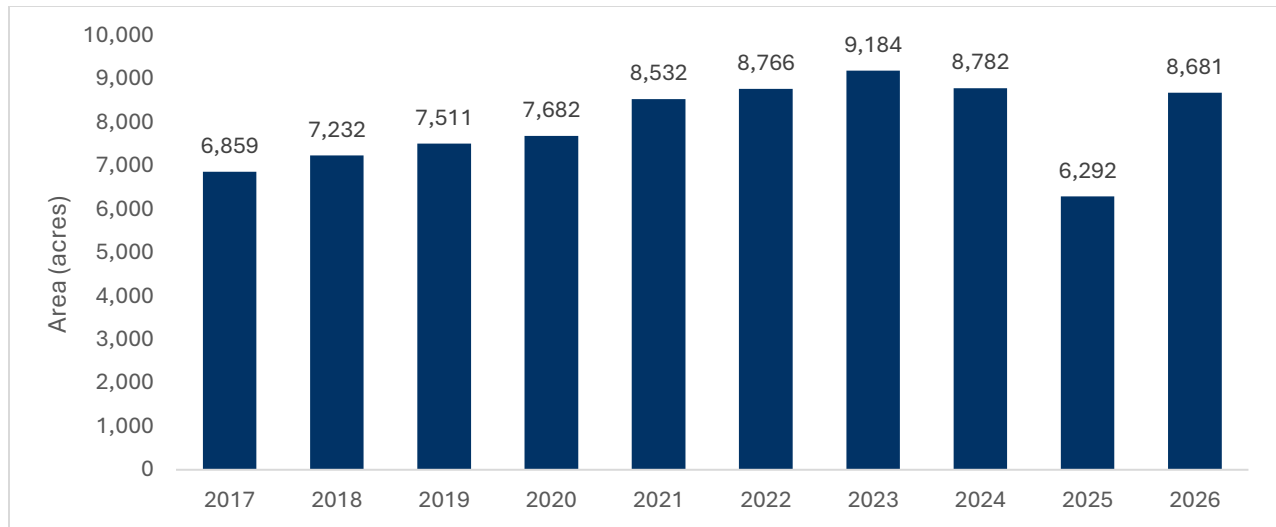


Table 2 shows acreage for the last two years of data, colour-coded for red and white. The top six varieties account for approximately two-thirds of total area and production.

Table 2: Area (in acres) by top 20 varieties, 2025-2026

Variety	2025 Area	2025 Share of provincial area	2026 Area	2026 Share of provincial area
Pinot Noir	720	11%	1,216	14%
Merlot	765	12%	1,175	14%
Chardonnay	671	11%	1,083	12%
Cabernet Franc	742	12%	1,033	12%
Pinot Gris	665	11%	840	10%
Cabernet Sauvignon	509	8.1%	668	7.7%
Riesling	350	5.6%	432	5.0%
Syrah	199	3.2%	350	4.0%
Sauvignon Blanc	193	3.1%	303	3.5%
Gamay Noir	153	2.4%	243	2.8%
Gewurztraminer	158	2.5%	203	2.3%
Malbec	100	1.6%	126	1.4%
Viognier	94	1.5%	121	1.4%
Pinot Blanc	56	0.9%	79	0.9%
Petit Verdot	61	1.0%	78	0.9%
Foch	50	0.8%	46	0.5%
Muscat	35	0.6%	40	0.5%
Pinot Meunier	28	0.4%	38	0.4%
Ehrenfelser	36	0.6%	37	0.4%

Marquette	68	1.1%	36	0.4%
-----------	----	------	----	------

The province-level statistics cited above mask Region- and Area-level variation, which the rest of this report will explore in greater detail.

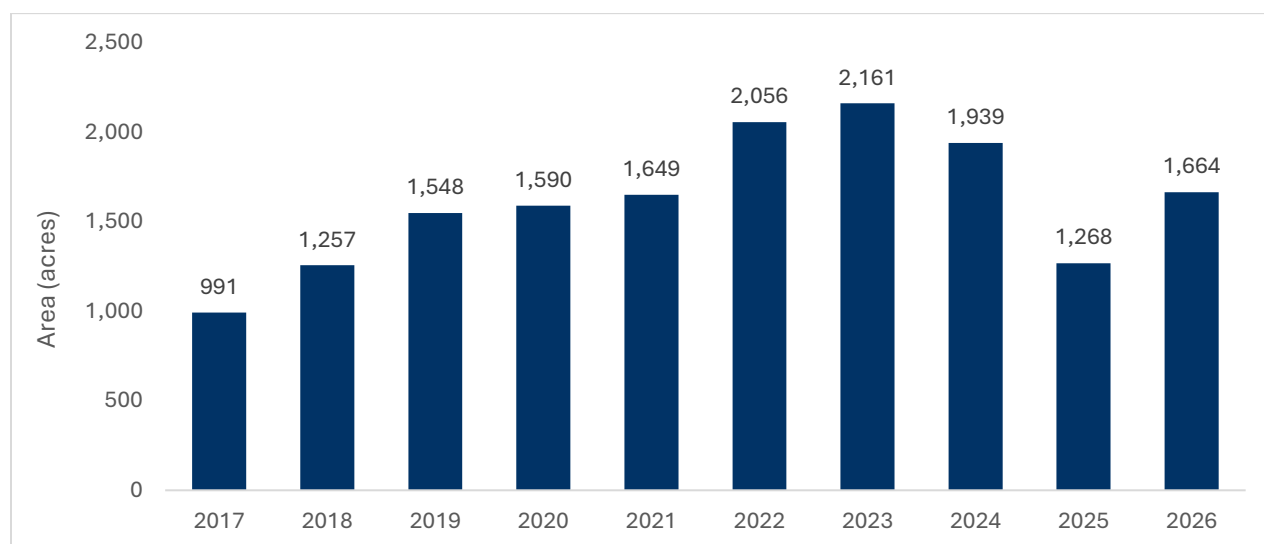
## Analysis by region and area

Production insurance for wine grapes is divided into eight geographic Regions, each of which is subdivided into Areas (see Table 1). The last five years of data are displayed. The last year of data available is 2026 for acreage.

The wine grape acreage summary analysis below is confined mostly to the Region level. Because the three largest regions – Central, South, and South-Central Okanagan – are responsible for 91% of growing area and 96% of output, accompanying data tables are provided at the Area level.<sup>3</sup> To maintain confidentiality, a variety in the top 10 is removed from a table whenever a producer insuring that variety within a given area could be identified. Values from this variety are then captured in the “all other” category. Lastly, percentages in the young acres tables may not sum to 100% due to rounding.

### Region: Central Okanagan

Figure 3: Wine grape growing area (in acres), Central Okanagan, 2017-2026



<sup>3</sup> At the same time, it is worth noting that these three regions were among the hardest hit from the polar vortex of 2024, when their share of provincial production fell to 54%.

Central Okanagan accounts for 19% of total provincial acreage.

### Area: Kelowna

Table 3: Acres and young acres by top varieties, Kelowna, 2022-2026

Acres	2022	2023	2024	2025	2026	Young acres ratio	2022	2023	2024	2025	2026
Pinot Noir	103.4	129.1	119.2	67.2	112.4	Pinot Noir	45%	46%	46%	32%	38%
Riesling	50.4	55.7	61.0	64.4	79.9	Chardonnay	25%	17%	12%	18%	18%
Chardonnay	52.0	53.6	44.5	36.6	58.2	Riesling	8%	2%	4%	20%	17%
Pinot Gris	64.2	56.9	41.0	20.4	34.8	Pinot Gris	16%	16%	18%	9%	5%
Gamay Noir	7.0	12.3	12.3	16.1	20.8	Gamay Noir	0%	6%	6%	6%	4%
Cabernet Franc	0.2	3.6	12.4	11.1	12.2	Marquette	0%	0%	0%	0%	4%
Merlot	2.7	4.3	11.9	9.0	11.3	Pinot Blanc	0%	0%	0%	0%	3%
Gewurztraminer	33.6	48.8	40.4	9.6	9.6	Sovereign Opal	1%	1%	1%	5%	2%
All 31 others	73.7	86.5	76.3	56.6	71.5	Sauvignon Blanc	4%	0%	0%	0%	2%
Total	387.0	450.8	418.8	291.0	410.7	Cabernet Franc	0%	3%	4%	2%	1%
						All 29 others	0%	8%	7%	8%	6%
						Total	100%	100%	100%	100%	100%

### Area: Lake Country

Table 4: Acres and young acres by top varieties, Lake Country, 2022-2026

Acres	2022	2023	2024	2025	2026	Young acres ratio	2022	2023	2024	2025	2026
Pinot Gris	183.9	183.8	170.7	131.3	127.8	Merlot	0%	0%	6%	21%	24%
Chardonnay	135.9	117.9	116.6	103.6	108.8	Cabernet Franc	22%	26%	45%	31%	23%
Riesling	68.3	68.3	69.5	66.8	67.6	Cabernet Sauvignon	48%	5%	0%	15%	21%
Merlot	121.6	121.6	107.4	51.1	54.3	Pinot Noir	3%	48%	16%	5%	14%
Pinot Noir	78.8	94.6	83.6	47.2	53.5	Chardonnay	6%	3%	1%	2%	4%
Sauvignon Blanc	29.8	26.5	26.5	21.8	18.9	Carmenere	0%	0%	0%	1%	3%
Gewurztraminer	59.6	59.6	55.4	12.1	12.0	Pinot Gris	11%	17%	3%	8%	3%
Gamay Noir	22.7	22.7	13.0	9.8	9.8	Viognier	0%	0%	0%	4%	2%
All 27 others	210.9	215.6	207.1	147.0	143.9	Syrah	0%	0%	24%	4%	2%
Total	911.5	910.6	849.8	590.7	596.6	Tempranillo	0%	0%	0%	4%	1%
						All 25 others	11%	1%	3%	4%	3%
						Total	100%	100%	100%	100%	100%

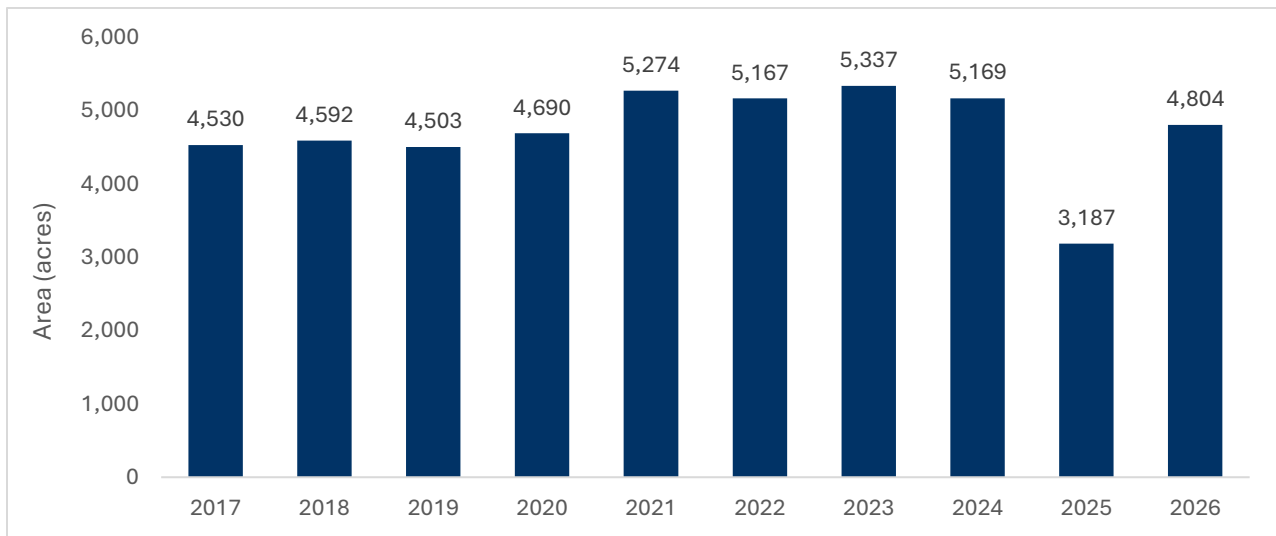
## Area: West Kelowna/Peachland

Table 5: Acres and young acres by top 10 varieties, West Kelowna/Peachland, 2022-2026

Acres	2022	2023	2024	2025	2026	Young acres ratio	2022	2023	2024	2025	2026
Pinot Noir	156.9	158.4	174.9	100.6	194.3	Pinot Noir	17%	17%	43%	29%	35%
Chardonnay	120.5	115.7	90.4	55.5	108.1	Chardonnay	10%	12%	15%	20%	19%
Pinot Gris	82.6	102.3	74.4	38.7	75.0	Pinot Gris	24%	16%	5%	6%	10%
Gamay Noir	53.2	52.8	44.3	29.7	41.1	Gamay Noir	16%	6%	3%	8%	5%
Riesling	34.2	38.6	36.1	25.6	32.4	Cabernet Franc	0%	14%	13%	3%	5%
Cabernet Franc	5.7	16.7	25.2	11.4	22.7	Pinot Meunier	0%	1%	3%	2%	4%
Merlot	38.7	32.8	22.8	12.6	21.7	Merlot	0%	0%	0%	4%	4%
Foch	18.6	17.0	17.0	17.7	18.7	Vidal	8%	2%	0%	2%	2%
Gewurztraminer	62.4	55.3	43.8	12.7	17.9	Misc Hybrid	0%	0%	0%	0%	2%
Pinot Meunier	5.0	6.8	9.3	3.9	15.5	Sangiovese	0%	0%	0%	2%	2%
All 37 others	179.5	202.9	132.5	78.2	109.8	All 37 others	26%	32%	18%	23%	12%
Total	757.3	799.3	670.6	386.5	656.9	Total	100%	100%	100%	100%	100%

## Region: South Okanagan

Figure 4: Wine grape growing area (in acres), South Okanagan, 2017-2026



South Okanagan accounts for 55% of total provincial acreage.

## Area: Oliver

Table 6: Acres and young acres by top 10 varieties, Oliver, 2022-2026

Acres	2022	2023	2024	2025	2026	Young acres ratio	2022	2023	2024	2025	2026
Merlot	798.9	853.2	824.0	323.4	617.7	Merlot	18%	22%	17%	15%	17%
Cabernet Franc	430.0	468.0	491.0	328.4	535.6	Chardonnay	7%	14%	19%	18%	16%
Chardonnay	409.6	436.1	450.3	227.8	466.8	Cabernet Franc	21%	16%	16%	13%	15%
Cabernet Sauvignon	525.5	542.6	530.9	337.5	421.5	Sauvignon Blanc	7%	4%	10%	10%	10%
Pinot Noir	337.9	351.4	384.0	162.8	362.3	Pinot Noir	8%	7%	9%	13%	10%
Pinot Gris	365.8	360.3	312.4	205.0	269.5	Syrah	4%	7%	5%	4%	8%
Syrah	274.5	286.4	233.7	86.9	192.5	Cabernet Sauvignon	9%	7%	7%	3%	6%
Sauvignon Blanc	264.5	242.2	250.5	98.0	187.5	Pinot Gris	10%	6%	5%	7%	5%
Riesling	183.3	171.9	160.4	93.4	147.5	Gamay Noir	1%	3%	3%	2%	3%
Malbec	51.1	58.1	51.4	34.8	58.4	Malbec	2%	3%	1%	3%	2%
All 48 others	495.8	500.0	412.7	263.0	397.7	All 48 others	14%	11%	7%	11%	8%
Total	4,136.9	4,270.3	4,101.2	2,161.1	3,657.0	Total	100%	100%	100%	100%	100%

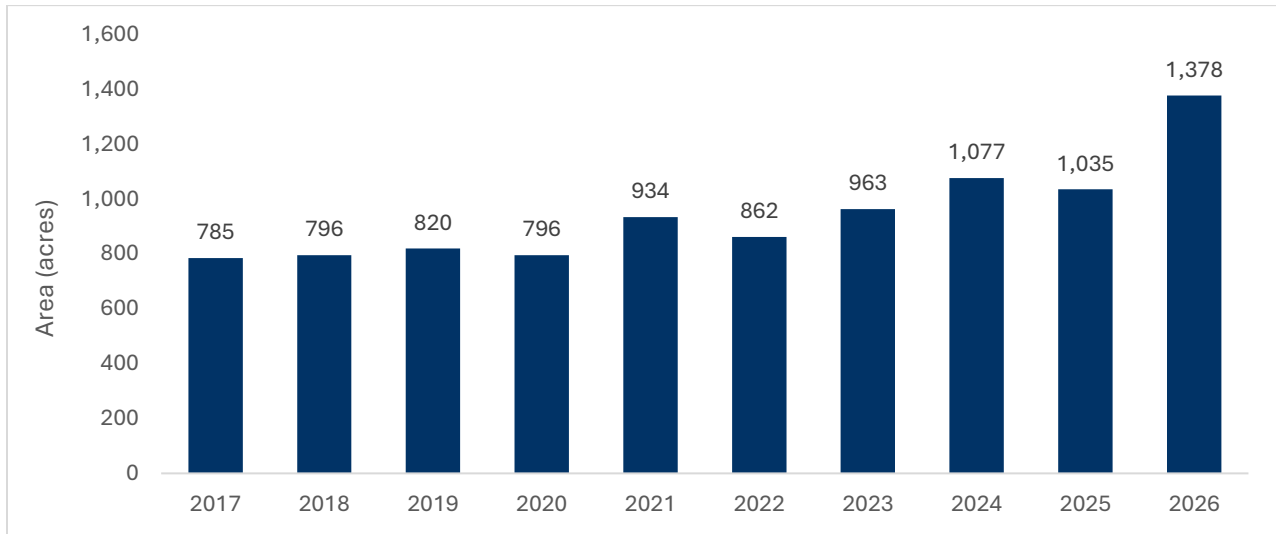
## Area: Osoyoos

Table 7: Acres and young acres by top 10 varieties, Osoyoos, 2022-2026

Acres	2022	2023	2024	2025	2026	Young acres ratio	2022	2023	2024	2025	2026
Merlot	281.1	292.3	297.8	232.2	263.7	Merlot	21%	26%	20%	19%	22%
Cabernet Franc	219.7	235.3	231.5	237.2	258.0	Cabernet Franc	28%	23%	17%	15%	16%
Cabernet Sauvignon	107.2	105.8	132.4	91.0	113.4	Chardonnay	3%	8%	12%	12%	11%
Pinot Gris	78.5	67.7	49.6	90.6	81.5	Syrah	5%	5%	7%	6%	10%
Syrah	88.2	88.7	82.1	57.0	77.4	Pinot Noir	13%	14%	11%	16%	10%
Pinot Noir	49.5	62.0	60.1	69.7	75.2	Cabernet Sauvignon	2%	3%	11%	4%	8%
Chardonnay	29.7	36.1	46.1	66.1	74.4	Pinot Gris	12%	6%	5%	12%	7%
Sauvignon Blanc	20.3	18.0	18.2	29.4	30.3	Gamay Noir	6%	8%	6%	6%	3%
Gamay Noir	18.9	30.6	26.3	24.0	30.2	Sauvignon Blanc	3%	0%	3%	3%	3%
Petit Verdot	26.5	27.7	27.5	27.9	29.0	Viognier	0%	0%	1%	2%	2%
All 25 others	110.2	102.6	96.5	101.6	114.3	All 25 others	7%	7%	8%	6%	6%
Total	1,029.7	1,066.8	1,068.1	1,026.4	1,147.4	Total	100%	100%	100%	100%	100%

## Region: South Central Okanagan

Figure 5: Wine grape growing area (in acres), South Central Okanagan, 2017-2026



South Central Okanagan accounts for 16% of total provincial acreage.

## Area: Naramata

Table 8: Acres and young acres by top 10 varieties, Naramata, 2022-2026

Acres	2022	2023	2024	2025	2026	Young acres ratio	2022	2023	2024	2025	2026
Pinot Noir	37.7	51.5	52.4	57.9	64.8	Merlot	0%	12%	13%	21%	22%
Chardonnay	16.3	29.6	28.5	34.1	34.0	Pinot Noir	86%	43%	45%	21%	18%
Merlot	19.0	26.3	22.1	20.9	30.6	Cabernet Franc	4%	10%	6%	15%	18%
Pinot Gris	15.7	21.7	22.1	19.6	22.1	Cabernet Sauvignon	0%	2%	1%	1%	8%
Gewurztraminer	10.4	10.4	10.3	13.2	17.5	Gewurztraminer	0%	0%	0%	0%	7%
Cabernet Franc	3.2	7.1	6.9	11.4	15.9	Chardonnay	1%	12%	15%	10%	5%
Riesling	8.2	9.3	10.5	10.1	11.2	Gamay Noir	0%	2%	2%	10%	5%
Gamay Noir	5.2	12.3	12.0	12.3	10.7	Pinot Blanc	0%	0%	0%	1%	4%
Sauvignon Blanc	6.1	9.8	9.6	8.4	6.9	Lemberger	0%	0%	0%	9%	4%
Pinot Blanc	3.0	5.1	4.4	3.0	6.1	Pinot Gris	6%	2%	5%	2%	3%
All 20 others	20.0	22.7	23.6	17.3	29.0	All 20 others	3%	17%	13%	9%	6%
Total	144.7	205.8	202.3	208.2	248.8	Total	100%	100%	100%	100%	100%

## Area: Penticton

Table 9: Acres and young acres by top 10 varieties, Penticton, 2022-2026

Acres	2022	2023	2024	2025	2026	Young acres ratio	2022	2023	2024	2025	2026
Pinot Noir	93.0	96.1	118.2	102.8	136.3	Pinot Noir	30%	19%	26%	16%	20%
Pinot Gris	103.6	109.9	129.2	92.9	135.1	Chardonnay	9%	17%	18%	17%	15%
Chardonnay	65.1	71.0	83.5	83.7	108.7	Pinot Gris	40%	38%	25%	14%	15%
Merlot	67.1	77.1	97.5	81.6	105.8	Merlot	5%	16%	16%	3%	10%
Cabernet Franc	33.5	33.5	41.9	46.9	53.0	Sauvignon Blanc	0%	1%	1%	17%	10%
Gewurztraminer	57.1	55.7	57.3	27.0	52.1	Gamay Noir	0%	2%	6%	5%	7%
Sauvignon Blanc	7.6	8.4	11.0	28.3	37.0	Cabernet Franc	3%	1%	2%	4%	5%
Gamay Noir	5.0	6.6	13.8	14.2	28.7	Pinot Blanc	0%	0%	0%	0%	3%
Riesling	29.0	29.0	33.2	37.1	28.0	Gruner Veltliner	0%	0%	0%	0%	3%
Malbec	13.6	13.6	14.9	18.9	20.7	Pinot Meunier	0%	0%	0%	6%	2%
All 38 others	93.5	90.9	92.4	109.9	129.6	All 38 others	13%	6%	4%	16%	10%
Total	568.0	591.6	692.9	643.4	835.0	Total	100%	100%	100%	100%	100%

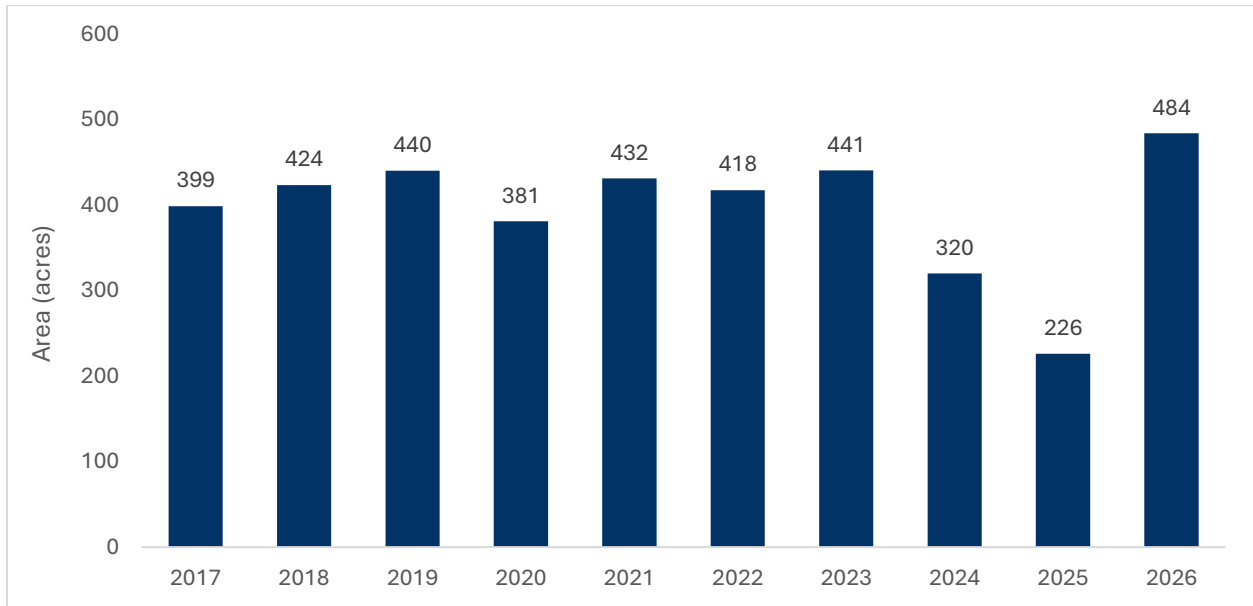
## Area: Summerland

Table 10: Acres and young acres by top 10 varieties, Summerland, 2022-2026

Acres	2022	2023	2024	2025	2026	Young acres ratio	2022	2023	2024	2025	2026
Pinot Noir	39.4	46.1	60.8	48.7	97.7	Pinot Noir	37%	58%	55%	80%	55%
Chardonnay	19.4	19.4	25.0	16.1	41.9	Chardonnay	22%	10%	24%	4%	19%
Pinot Gris	19.7	22.2	23.0	27.2	37.5	Gamay Noir	15%	9%	5%	8%	12%
Gewurztraminer	16.6	21.0	20.9	35.3	37.1	Merlot	11%	7%	0%	0%	6%
Gamay Noir	12.4	11.0	5.1	12.2	21.6	Riesling	0%	0%	0%	0%	2%
Riesling	7.0	8.3	8.4	6.9	13.0	Pinot Meunier	0%	0%	0%	0%	2%
Merlot	14.9	14.8	12.0	7.8	12.9	Pinot Gris	9%	1%	1%	0%	1%
Pinot Meunier	4.7	4.7	5.8	4.5	5.1	Baco Noir	0%	0%	0%	3%	1%
Pinot Blanc	0.2	0.2	0.2	6.8	4.5	Syrah	0%	0%	0%	0%	1%
Cabernet Franc	0.0	0.7	1.1	0.4	4.4	Malbec	0%	0%	5%	4%	1%
All 13 others	15.1	17.3	19.4	17.9	18.4	All 13 others	5%	16%	10%	0%	2%
Total	149.3	165.7	181.6	183.8	294.1	Total	100%	100%	100%	100%	100%

## Region: Similkameen

Figure 6: Wine grape growing area (in acres), Similkameen, 2017-2026



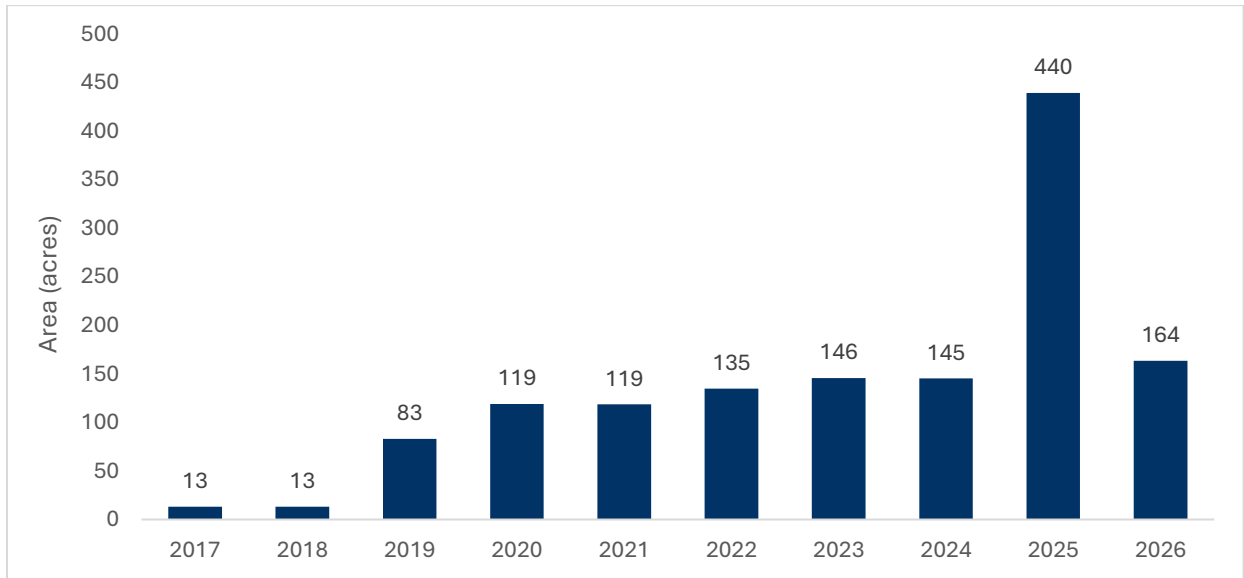
Similkameen accounts for 6% of total provincial acreage.

Table 11: Acres and young acres by top 10 varieties, Similkameen, 2022-2026

Acres	2022	2023	2024	2025	2026	Young acres ratio	2022	2023	2024	2025	2026
Cabernet Franc	60.2	65.8	30.2	28.7	76.4	Cabernet Sauvignon	15%	10%	20%	14%	16%
Cabernet Sauvignon	71.4	73.9	55.1	32.8	70.2	Cabernet Franc	28%	24%	10%	11%	15%
Pinot Noir	20.0	19.0	44.5	25.0	54.0	Merlot	8%	7%	7%	8%	10%
Merlot	84.2	82.5	46.2	20.9	49.3	Syrah	11%	10%	18%	10%	10%
Chardonnay	21.1	19.7	30.0	26.3	45.9	Chardonnay	3%	2%	6%	10%	8%
Syrah	49.1	55.0	27.9	15.4	34.8	Pinot Noir	8%	4%	14%	8%	7%
Pinot Gris	16.1	20.6	28.4	24.7	33.8	Gamay Noir	1%	0%	0%	2%	5%
Riesling	18.4	13.3	11.8	9.6	18.7	Sauvignon Blanc	1%	1%	1%	2%	4%
Gamay Noir	7.4	7.0	5.7	5.6	15.8	Petit Verdot	9%	10%	5%	2%	4%
Petit Verdot	14.5	18.2	14.0	4.6	13.8	Pinot Gris	2%	6%	5%	10%	4%
All 25 others	55.3	65.9	26.9	33.1	71.4	All 25 others	14%	27%	14%	22%	19%
Total	417.7	441.0	320.5	226.4	484.2	Total	100%	100%	100%	100%	100%

## Region: Thompson/Shuswap

Figure 7: Wine grape growing area (in acres), Thompson-Shuswap, 2017-2026



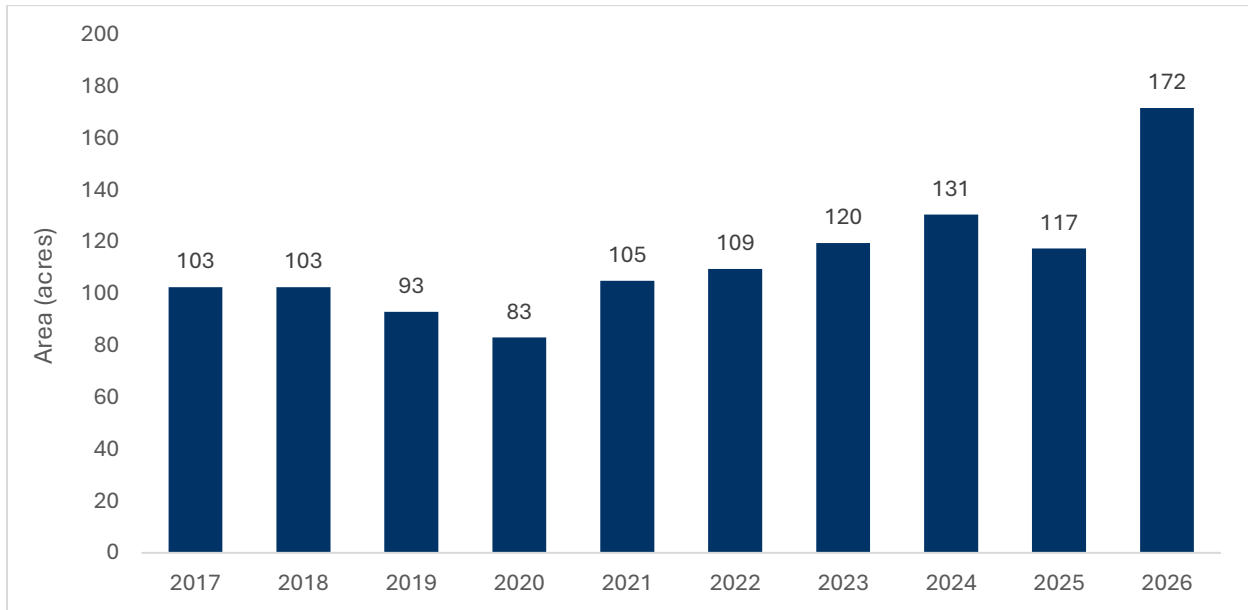
Thompson/Shuswap accounts for 2% of total provincial acreage.

Table 12: Acres and young acres by top varieties, Thompson/Shuswap, 2022-2026

Acres	2022	2023	2024	2025	2026	Young acres ratio	2022	2023	2024	2025	2026
Pinot Noir	16.9	17.5	32.2	19.5	23.7	Chardonnay	7%	0%	0%	9%	20%
Riesling	21.2	21.7	21.5	21.8	19.1	Pinot Noir	34%	47%	88%	30%	20%
Cabernet Franc	12.7	12.7	7.2	12.2	12.9	Riesling	14%	4%	0%	14%	13%
Chardonnay	11.8	11.8	11.6	8.0	12.1	Gamay Noir	7%	0%	5%	12%	7%
Ortega	1.7	4.8	2.9	9.4	10.7	Merlot	6%	0%	0%	0%	5%
Siegerrebe	2.5	4.8	5.9	10.4	9.2	Cabernet Franc	13%	0%	0%	1%	5%
Foch	7.8	11.6	13.2	15.2	9.1	Cabernet Sauvignon	4%	0%	0%	1%	4%
All 20 others	60.2	60.9	50.8	343.3	66.9	Ortega	0%	0%	0%	1%	1%
Total	134.8	145.8	145.3	439.9	163.7	All 19 others	15%	49%	7%	33%	25%
						Total	100%	100%	100%	100%	100%

## Region: Coast

Figure 8: Wine grape growing area (in acres), Coast, 2017-2026



The Coast accounts for 2% of total provincial acreage.

Table 13: Acres and young acres by top varieties, Coast, 2022-2026

Acres	2022	2023	2024	2025	2026
Pinot Noir	15.8	20.0	20.1	13.5	38.4
Bacchus	16.5	19.0	20.5	20.3	22.9
Chardonnay	8.4	12.7	14.3	10.2	22.3
Pinot Gris	10.9	11.0	13.1	10.5	18.8
Ortega	9.7	9.8	9.8	8.5	11.3
Gamay Noir	5.3	5.3	8.5	8.5	10.3
Siegenerrebe	10.1	8.8	8.8	8.8	9.0
Foch	6.7	6.1	7.9	7.9	7.8
Silvaner	4.9	4.9	4.9	4.9	4.9
Madeleine Angevine	3.9	4.7	4.7	4.6	4.6
All 14 others	17.2	17.3	18.0	19.7	21.4
<b>Total</b>	<b>109.5</b>	<b>119.6</b>	<b>130.5</b>	<b>117.5</b>	<b>171.7</b>

Young acres	2022	2023	2024	2025	2026
Pinot Noir	0%	51%	41%	0%	38%
Chardonnay	0%	32%	25%	0%	36%
Pinot Gris	0%	0%	0%	0%	10%
Zweigelt	16%	1%	0%	47%	6%
Bacchus	56%	1%	9%	27%	2%
All 19 others	28%	15%	25%	26%	7%
<b>Total</b>	<b>100%</b>	<b>100%</b>	<b>100%</b>	<b>100%</b>	<b>100%</b>

## Region: North Okanagan

The region does not contain sufficient data to be displayed.

## Region: Kootenay

The region does not contain sufficient data to be displayed.

## Caveats and limitations

There are several data limitations that affect reliability and validity. Users should exercise caution in extrapolating or drawing inferences from the numbers provided in this report.

- BRM production insurance data is not comprehensive, as some growers opt not to insure their crop. Coverage includes approximately 87% of wine grape acres across the province.
- Changes in coverage rates over time can cause changes in area and production, independent of changes caused by existing growers' business decisions.
- Other changes to data collection methods have been implemented over time that make long-range time analyses difficult.
- Data is collected at the insurance contract level, regardless of location of production. Because some producers have operations in multiple locations, data is therefore attributed to the location of the main operation. As a result, some areas may be underrepresented and others overrepresented, but the discrepancy is likely very small.

## Appendix 1: Region boundaries

<b>Region</b>	<b>Description</b>
Central Okanagan	Greata Ranch to Kalamalka Lake
South Okanagan	South of McIntyre Creek Rd to the US border. East of Nighthawk Rd and Oliver Cawston Rd summit. West of Anarchist summit.
South Central Okanagan	North of McIntyre Creek Rd to South of Greata Ranch
North Okanagan	Kalamalka Lake to Mara Lake
Similkameen	West of Nighthawk Rd, Oliver Cawston Rd summit and Yellow Lake. East of Hedley.
Thompson/ Shuswap	Sicamous and Malakwa West to Pemberton. South of Barriere. North of Yale (West) and Mara Lake (East).
Coast	Vancouver Island, South of Pemberton and West of Hope
Kootenay	East of Big White and Anarchist Summit to Alberta Border