

Insect and Mite Pests of Grape in the Southern Interior of B.C.

Tom Lowery (Lowery Ent. Res. Ltd.)
Michael Weis (AAFC-PARC Summerland)
Hans Buchler



Adult click beetle



Click beetle damage to grape bud



Cutworm larva



Cutworm damage to grape bud



Cutworm damage to young shoot



Snailcase bagworm, *Apterona helix*, larvae and (insert) casebearer moth larvae, *Coleophora* sp.

This publication is a companion to the *Management Guide for Grapes for Commercial Growers*, British Columbia Wine Institute, Kelowna, B.C. (www.winebc.com). Please refer to that publication for information relating to the biology and management of insect and mite pests of grapes in B.C.

Credits: All photos provided by M. Weis, AAFC-PARC Summerland, unless noted.

Partial funding provided by B.C. Inv. Agr. Foundation and the Industrial Res. Assist. Program, NRC.

June 2004.

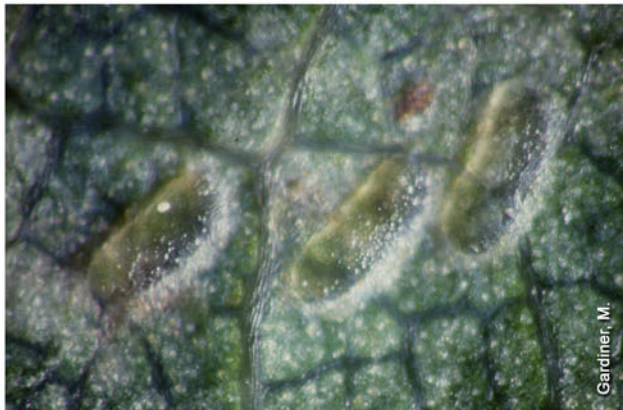
Insect and Mite Pests of Grape in the Southern Interior of B.C.



Virginia creeper leafhopper, *Erythroneura ziczac*, adult



Virginia creeper leafhopper nymphs



Virginia creeper leafhopper eggs



Western grape leafhopper, *Erythroneura elegantula*, adult



Western grape leafhopper nymph



Leafhopper feeding damage to leaves



Grapes spotted with leafhopper excrement



Grapes infested with grape mealybug, *Pseudococcus maritimus*, and (inset) closeup of adult

Insect and Mite Pests of Grape in the Southern Interior of B.C.



Immature cottony maple scale, *Pulvinaria vitis*



Adult female cottony maple scale with cottony egg masses being attended by ants



European fruit lecanium scale, *Parthenolecanium corni*



Whitefly adult



Whitefly nymph



Grape phylloxera, *Daktulosphaira vitifoliae*, adults and eggs on grape roots



Phylloxera-induced galls on grape roots



Phylloxera galls on leaf of grape hybrid

Insect and Mite Pests of Grape in the Southern Interior of B.C.



Adult minor cicada, *Platypedia minor*



Western flower thrips, *Frankliniella occidentalis*, nymph



Thrips damage to shoot and leaves in late summer



Western flower thrips adult



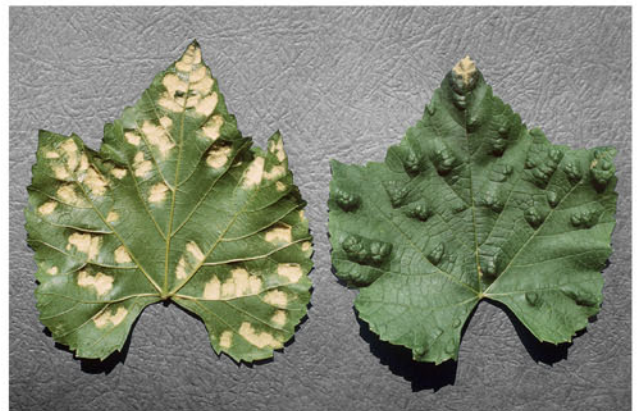
Scarring of fruit by early-season thrips feeding



Adult European red mite, *Panonychus ulmi*



Adult two-spotted spider mite, *Tetranychus urticae*



Grape erineum mite, *Colomerus vitis*, or grape leaf blister mite, leaf galls